

Art and culture



All Alongside Of Each Other by Rose Nolan, Central Station. Image: Sydney Metro.

Sydney Metro art

All Alongside of Each Other celebrates the daily passage of people as they move through Central Station. Using the strong graphic form of the athletics track, it marks time and place as commuters actively follow parallel paths to reach their destination.

The track introduces whimsical notions of outdoors, recreation, fitness, collaboration and improvement. The floor text offers a series of meditative guides for the repeat commuter, whose journey may be heightened by different phrases and interpretations.

It unifies and connects us in an invitation to play. It evokes the constant flow and circularity of daily life, whilst tracking the past, present and future.



Time Travellers by Dr. Bronwyn Bancroft with Woods Bagot, Central Station. Image: Sydney Metro.

Bundjalung artist, Bronwyn Bancroft's *Time Travellers* is embedded in bespoke brickwork on the station services buildings. Eclectic patterning and electric imagery create a visual emblem of one of many creation stories handed down over time, honouring the DNA of ancient Aboriginal Australia.

Did you know?



Central Walk concourse was built below eight existing platforms, just two metres below live tracks, while trains remained operational throughout.

The renewable energy generated from the **664 solar panels** will power lights across three Central Station platforms and lower the electricity demand of Sydney Trains assets at the station by around 10 per cent.

A total of **4,519 Glass Reinforced Concrete panels** were installed. The weight varied for each, but some were up to 400 kilograms. The longest panels are 4.5 metres.

The **roof canopy at the Northern Concourse has been built three times**, once virtually, the second time offsite at Kurri-Kurri (Hunter Valley) and last at Central Station. Can you spot the different roof colours?

This site was the **Devonshire Street Cemetery** until 1867. Despite most of the graves being removed prior to the construction of Central Station in 1901, more than **60 graves and 5 vaults** were discovered during construction works for Sydney Metro.

Aboriginal heritage

At Australian Hall in 1938, the first National Indigenous Protest was organised by the Aboriginal Progressive Association and the Australian Aborigines League.

Called the Day of Mourning, this event coincided with the 1938 sesquicentenary (150 years) celebrations for Australia Day.

It was this protest that would inspire Aboriginal people around Australia and would later become the Land Rights protest.

This heritage listed building is now owned by the Indigenous Land Corporation.

Find out more at
transportnsw.info
sydnymetro.info

Scan to
access other
culture maps



24008-COO-C5W 12.24

© Sydney Metro 2024. © State of New South Wales (Transport for NSW) 2024.

Sydney Metro

M Central Culture Map



Central Station's upgraded Northern Concourse with transformed pedestrian thoroughfares and feature roof. Image: Sydney Metro.

Central Station has a rich heritage connecting the city to the suburbs, regional NSW and major Australian cities.

The new Central Railway Station opened in 1906 after several years of construction. On 3 March 1921, Central Station's clock tower, known as the 'working man's watch' came into use at 10:22am.

Nearby places

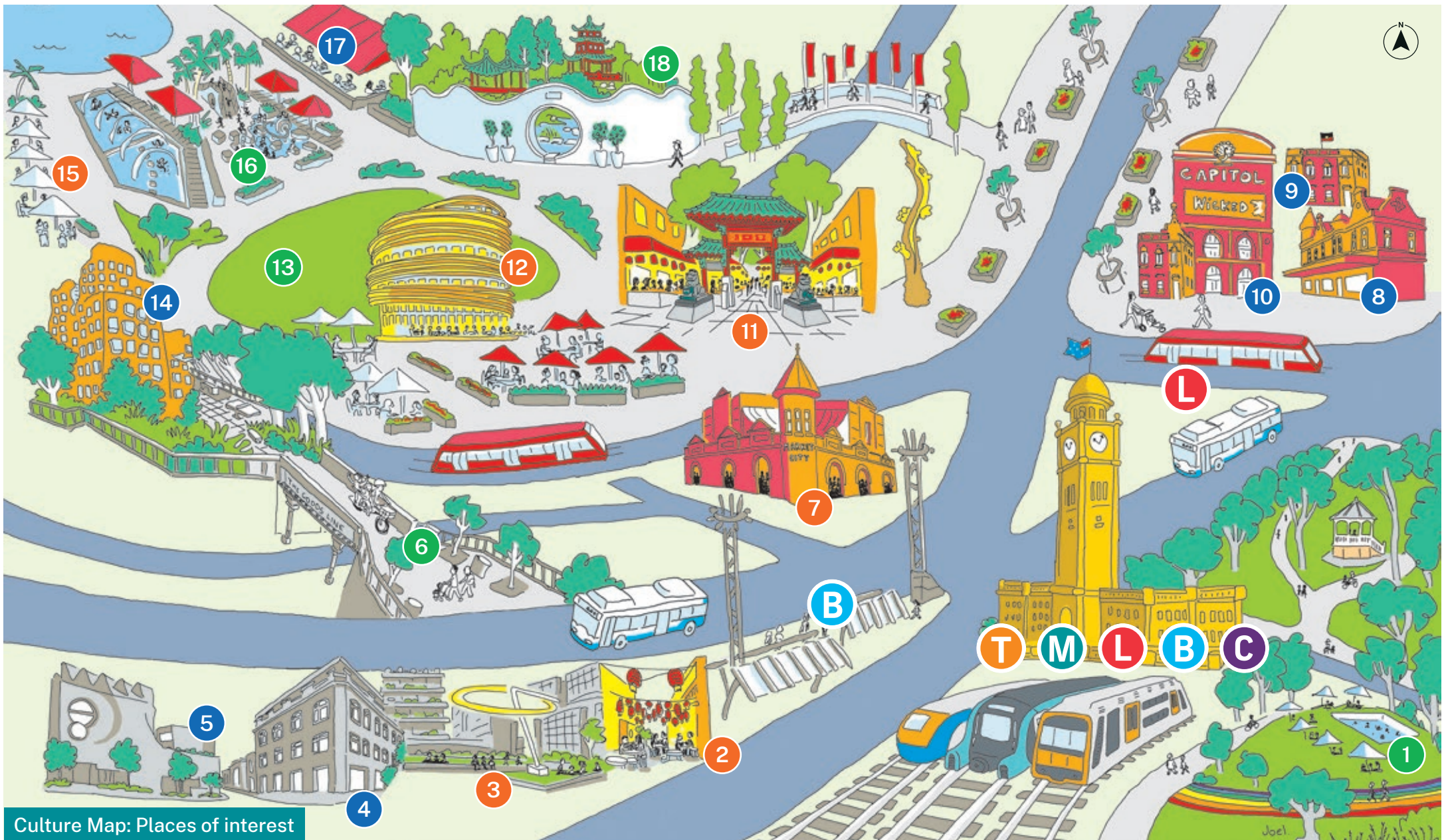
To the north, Chinatown features Paddy's Markets, diverse food stores, restaurants and late-night karaoke. The vibrant laneways of Darling Quarter lead on to Darling Harbour, a buzzing waterside family-friendly destination 17 minutes walk from Central.

To the west, explore Spice Alley and contemporary art venues in Chippendale or take the Goods Line to Pyrmont.

South of Central, just a 2 minute train ride away, you will find Redfern with its rail heritage buildings, South Eveleigh's Innovation Plaza and Carriageworks creative hub.

To the east, visit the creative communities, cafes and speciality shops of Surry Hills.





Culture Map: Places of interest

KEY

- | | | | | | |
|--------------------------------------|--------------|---------------------------------|--|---------------------------------------|-----------------------------------|
| ● Arts/heritage | Ⓜ Metro | Ⓜ Central Station | ● 5 The Phoenix Theatre | ● 10 Capitol Theatre | ● 15 Darling Harbour |
| ● Walking tours, parks and gardens | Ⓣ Train | ● 1 Prince Alfred Park and Pool | ● 6 The Goods Line | ● 11 Chinatown (Dixon Street) | ● 16 Darling Harbour Playground |
| ● Shopping, dining and entertainment | Ⓛ Light Rail | ● 2 Spice Alley | ● 7 Paddy's Markets | ● 12 Darling Square and Library | ● 17 Monkey Baa Theatre |
| | Ⓟ Bus | ● 3 Central Park | ● 8 4A Centre for Contemporary Asian Art | ● 13 Tumbalong Park | ● 18 Chinese Garden of Friendship |
| | Ⓢ Coach | ● 4 White Rabbit Gallery | ● 9 Australian Hall | ● 14 Dr Chau Chak Wing Building (UTS) | |

Artist's impression of Central and surrounds. This drawing is not to scale and is for illustrative purposes only. Illustrator Joel Turling.